



# Power Booster

## User Instruction Manual



Up to 4500 psi

# Contents

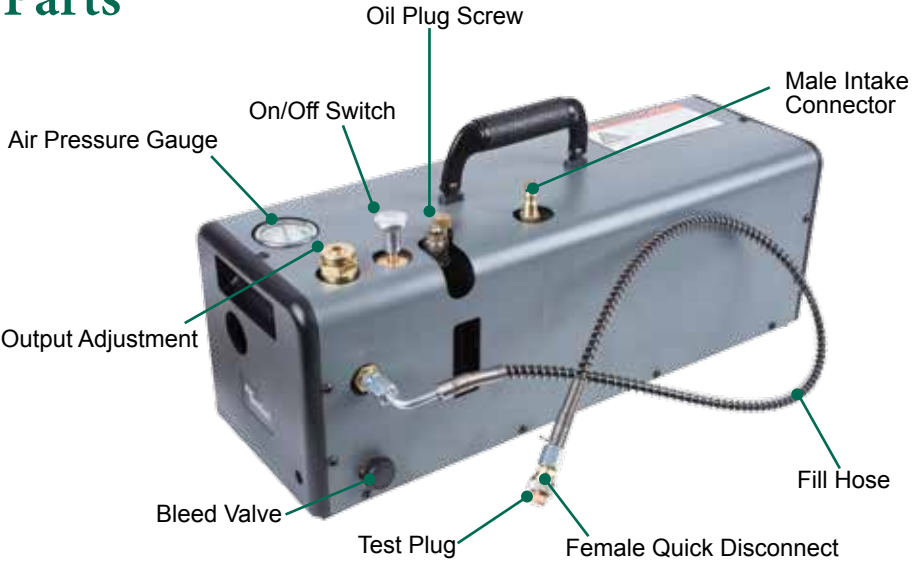
Parts .....	3
Assembly Instructions.....	4
Operation Requirements .....	5
Calibrating Your Output Adjustment.....	6
Operating Instructions .....	7-8
Draining the Oil Catch .....	9
Troubleshooting.....	10
Warranty.....	11

<b>⚠ DANGER</b>	<b>DANGER OF EXPLOSION!</b> Overfilled compressed air cylinder	
DO NOT EXCEED MAXIMUM FILL PRESSURE OF YOUR CYLINDER AT ROOM TEMPERATURE!		

<b>⚠ IMPORTANT</b>	YOU AND OTHERS WITH YOU SHOULD ALWAYS WEAR SAFETY GLASSES TO PROTECT YOUR EYES. READ ALL INSTRUCTIONS BEFORE USING.
--------------------	---

<b>⚠ WARNING</b>	DO NOT OVERFILL AIR CYLINDERS OR AIR GUN TANKS, AS THIS CAN CAUSE SERIOUS INJURY OR DEATH. NEVER SET THE OUTPUT PRESSURE/AUTO SHUT OFF ABOVE 4500 PSI (310 BAR).
------------------	--

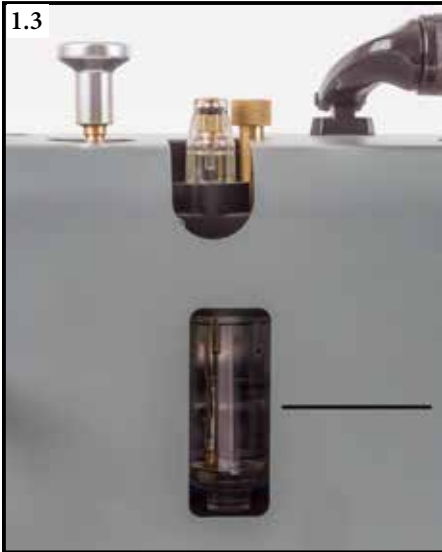
# Parts



*(Bottom View)*

# Assembly Instructions

Unscrew (counterclockwise) **(1.1)** the oil plug screw and fill oil bottle no less than halfway full with compressor oil or hydraulic oil **(1.2)**. Monitor the fill level via the window on the front of the booster **(1.3)**. Once filled, replace the oil plug screw by screwing (clockwise) it back into the housing **(1.4)**.



# Operation Requirements

- 1) To operate this Booster unit, you will need an air compressor. A shop compressor capable of producing at least five (5) cubic feet per minute (CFM) is recommended. The Booster will work with a compressor producing less than 5 CFM, but the fill times will be slower.
- 2) The compressor used must be capable of a working output pressure between 60 - 90 psi.

## Calibrating your Output Adjustment

**Your Booster comes calibrated to 3000 psi (+/- 10%). Should you require higher or lower fill pressures, please follow the calibration instructions below.**

- 1) Your booster comes with a plug for the end of the fill hose (1). Make sure the plug is securely attached to the end of your hose.
- 2) Set the Output Adjustment with the supplied allen key (2). Align the notch on the output adjustment with the desired output pressure.  
*NOTE: The numbers along the outside of the adjustment area are approximations.*
- 3) Close the bleed valve (hand tight is sufficient), by turning the screw clockwise (3).

4) Once the bleed valve is closed, make sure your compressor is turned on and connect your compressor hose to the male connection on the Booster. There is now air flowing into the Booster.

5) With the hose plugged and your compressor attached to the input, turn the booster ON by pressing down on the ON/OFF switch (5).



# Calibrating your Output Adjustment

6) The Booster will automatically shut off when the set output pressure is reached, the ON/OFF switch will pop up into the OFF position.

7) Note the pressure that the Booster shuts off at by checking the Air Pressure Gauge and bleed the pressure in the hose by turning the bleed screw counter-clockwise (7). If the achieved pressure was below the desired pressure, turn the Output Adjustment clockwise. If the pressure was above the desired pressure, turn the Output Adjustment counter-clockwise. Remember, a small adjustment goes a long way!



**CAUTION:** Bleeding the pressure in the Booster can be loud, if you are in a close space or have sensitive ears it is recommended that you wear hearing protection when bleeding the pressure.

8) Repeat the process until you are satisfied with the result. Once you have found the proper point, mark this spot with a permanent marker on the gray cover. The mark should be in alignment with the notch in the output adjustment screw.

- a) Repeat this process for any other desired pressures that you may need. This will allow for easy and consistent adjustment between various fill pressures.



# Operation Instruction

1) Before connecting a compressor to the Booster, take a moment to properly set your desired output pressure. Use the provided allen key to turn the screw to the approximate fill pressure you desire (1).

**! WARNING** DO NOT overfill air cylinders or air gun tanks, as this can cause serious injury or death. Never set the output pressure/auto shut off above 4500 psi (310 BAR).

2) Close the bleed valve (hand tight is sufficient), by turning the screw clockwise (2).

3) Once the bleed valve is closed, make sure your compressor is turned on and connect your compressor hose to the male connection on the Booster (3). There is now air flowing into the Booster.

4) Connect the female quick disconnect fitting on the end of the Booster output hose to the device you wish to fill (4).

5) Once properly connected, press down on the ON/OFF switch to begin filling (5).

*Note: Your compressor may continue to run after the Booster has been turned off.*



**! CAUTION:** Do not leave the device you are filling unattended.

# Operation Instruction

6) When the Booster reaches the pre-set output pressure, the ON/OFF switch will pop up into the OFF position. This will automatically shut off the Booster.

7) If your desired fill pressure has been reached, you will need to do one of the following (7):

- If you are filling a tank with a valve that is manually opened and closed, you will need to close your valve. Once the valve is closed, bleed the excess pressure in the hose and Booster via the bleed valve screw (turning counterclockwise).
- If you are filling a tank with a check valve at the fill port (like the 90 Cubic Inch Air Venturi tank) bleed the excess pressure in the hose and Booster via the bleed valve screw (turning counterclockwise).
- If filling an air gun directly, bleed the excess pressure in the hose and Booster via the bleed valve screw (turning Counterclockwise).



**! CAUTION:** Bleeding the pressure in the Booster can be loud, if you are in a close space or have sensitive ears it is recommended that you wear hearing protection when bleeding the pressure.

8) You will know all of the pressure is out of the Booster when the gauge on the top of the Booster reads zero (0) psi (8).



9) Once the pressure is released, disconnect your filled device from the output hose via the female quick disconnect fitting (9).





# Draining the Oil Catch

On the underside of the booster you will find the oil catch (1.1). As your booster operates, oil will be drawn from the oil bottle, into the booster. Excess oil will end up in the oil catch. Check the oil catch every five (5) uses of the booster and drain when oil has accumulated. To drain the oil catch, turn the catch counterclockwise (1.2) until the catch is completely removed from the booster (1.3). Dispose of the used oil safely and properly. Reinstall the oil catch before using the booster by threading it clockwise back into the booster unit (1.4).



# Troubleshooting

**Issue:** The Booster turns off or stops running before the desired output pressure is reached.

**Solution:**

- a) Make sure the output pressure setting is in the proper position.
- b) If set properly, move the ON/OFF switch to the OFF position. Close the valve on your fill device if necessary. Bleed the excess pressure in the Booster and verify the gauge on the Booster returns to zero (0) psi.
- c) Once the gauge reads zero (0) psi, attempt the fill process again. Should the Booster fail to reach to desired output pressure a second time, contact the Air Venturi service department by calling: 216-220-1180.

**In the unlikely event that your Booster malfunctions, DO NOT ATTEMPT TO FIX THE PROBLEM YOURSELF. Please call Air Venturi's service line so we can address any issues or have you return the Booster for repair.**  
**Air Venturi Service Line: 216-220-1180**

# Warranty

## One Year Limited Warranty

Your Air Venturi Booster is manufactured to the highest possible standards, using quality materials to give a lifetime of service. In the unlikely event that there are any defects in materials or workmanship in the first twelve (12) months after retail purchase, we will repair or replace the defective items under warranty.

### What is covered?

- Replacement Parts and labor.
- Transportation charges to consumer for repaired product.

### What is NOT covered?

- Any damage or faults caused by owner misuse, action or inaction.
- Transportation charges to Air Venturi for defective products.
- Damages caused by abuse or failure to perform normal maintenance.
- Any other expense.
- Parts subject to normal wear and tear.
- Consequential damages, incidental damages or incidental expenses including damage to property.

This warranty is in addition to your statutory rights. Retain your sales receipt as proof of purchase.

***NOTE:** Some states do not allow the exclusion or limitation of incidental or consequential damages, so the above limitation or exclusion may not apply to you.*

### Warranty claims:

Call Air Venturi at 216-220-1180 before returning any product.

### Implied Warranties:

Any implied warranties, including the implied warranties of merchantability and fitness for a particular purpose, are limited in duration to one year from the date of retail purchase.

***NOTE:** Some states do not allow limitations on how long an implied warranty lasts, so the above limitation may not apply to you.*

To the extent any provision of this warranty is prohibited by federal, state or municipal law, which cannot be preempted, it shall not be applicable. This warranty gives you specific legal rights, any you may also have other rights, which vary from state to state and country to country.

Illustrations and photographs are for information purposes only and may not show the exact model you purchased.

### This warranty shall be invalid if the Booster:

- Has been incorrectly disassembled, reassembled or maintained.
- Has been fitted with non--Air Venturi parts.
- Has been abused, misused or improperly stored.
- Original purchase receipt cannot be presented.

# Air venturi

*The Power of Air*

**AIR VENTURI**

5135 Naiman Parkway, Cleveland, OH 44139

Ph: 216-292-2570 • fax: 216-373-0086