

Spring Air Rifle Instructions

IMPORTANT: Please read these instructions and view the CD-ROM before first using your rifle.



www.bsaguns.co.uk



Lightning XL

Meteor mk7

Gun Safety

- Make sure you know the laws relating to airguns, and abide by them.
- When you pick up any gun always check that it is not loaded.
- Never point a gun at anyone or anything that is not a legitimate target.
- Never leave your rifle unattended, even if it's unloaded.
- Gun safety is a state of mind; never rely on a safety catch.
- After use, put your rifle away safely; unloaded and out of reach of children. Store your pellets separately.
- Always ensure it is safe to shoot and be certain of your target before you squeeze the trigger.
- Make sure there is a safe backstop behind your target to catch your pellet in case you miss.
- Beware of ricochets – do not shoot at water or other smooth surfaces that may deflect the pellet in a different direction.
- Always unload your gun when crossing obstacles, taking it indoors or into a car.
- When carrying your rifle, be sure the muzzle is always pointing in a safe direction in case you should stumble.
- Never shoot on land without written permission from the owner.

Loading and Firing

Break barrel

Always apply the safety catch before loading the gun. This is done by pulling the lever backwards to the "SAFE" position which locks the trigger to prevent the rifle firing.

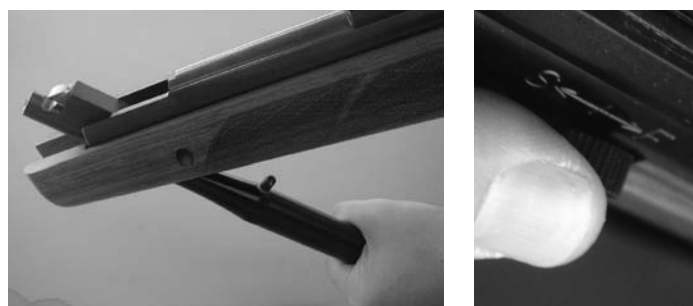
On the Meteor & Comet the safety is in front of the trigger, and on the Supersport & Lightning it is on the right side of the action; in all cases the rear position is "SAFE" and the forward position "FIRE". If the trigger is pulled when the barrel is open and the gun cocked, the barrel will slam shut causing damage to both the stock and barrel and possible serious injury to the shooter. Resulting repairs can be expensive and **are not covered by the warranty.**

With your fingers clear of the trigger area, grasp the pistol grip firmly with one hand and pull down the barrel as far as it will go with the other hand until the trigger engages.

Continuing to hold the barrel securely, insert a pellet nose first into the barrel and close the gun. When you are ready to fire, move the safety catch forward towards the 'F' position. Return the safety catch to the 'S' position after firing.

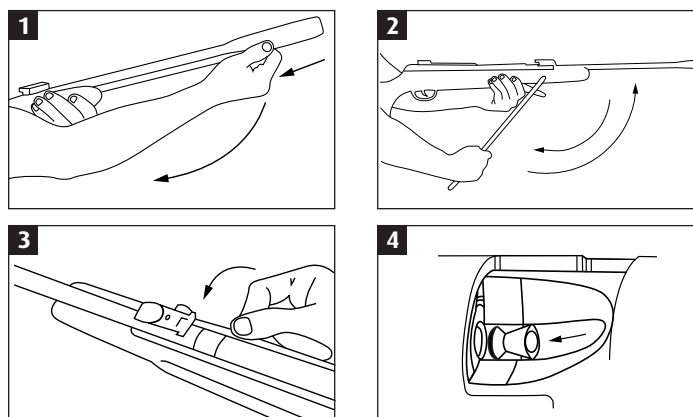


Note: Avoid prolonged 'dry firing' of your rifle (firing without a pellet) as this may cause damage to breech and piston seals.



Under-lever

The Polaris is an under-lever design. To cock the gun, release the underlever from its retaining catch (fig 1) and holding the gun as shown (fig 2) pull down on the underlever until the trigger sear engages and the gun cocks. Then while still holding the underlever, push the open the rotating breech (fig 3) and insert a pellet, pushing it into the barrel (fig 4). Do not try to open the rotating breech unless the gun is cocked or you may damage the breech seal.



Technical Information

All BSA airguns are made to the highest standards at our factory in Birmingham. BSA barrels are cold hammer forged and crowned for optimum accuracy.

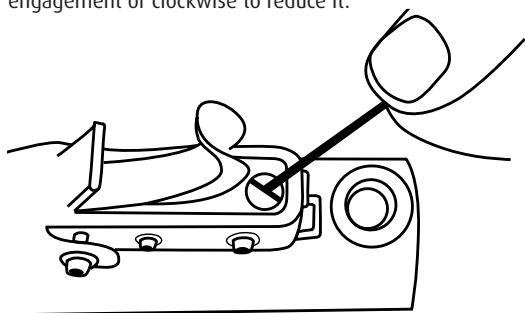
Before leaving the factory every airgun is tested on special purpose machinery to verify velocity and pellet grouping. UK law dictates that air rifles should not be capable of above 12 ft-lb of muzzle energy; all BSA models conform to this requirement. Export models are supplied to conform to the laws in the destination country.

Trigger Adjustment

Always ensure that your gun is not cocked or loaded before adjusting the trigger. In the interests of safety, take care not to over-lighten the trigger weight.

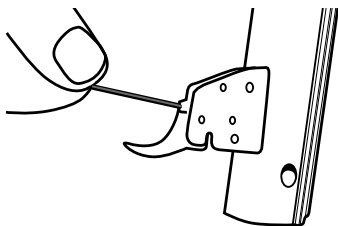
Meteor, Comet and Polaris

These models have a 2-stage trigger, the second stage can be adjusted using a flat head screw driver. The adjustment screw is located behind the trigger blade. Turn the adjustment screw anti-clockwise to increase the trigger engagement or clockwise to reduce it.



Supersport & Lightning Models

These models have a 2-stage trigger, the second stage can be adjusted using the Allen key provided, turn the adjustment screw clockwise to increase the trigger weight or anti-clockwise to lighten it.

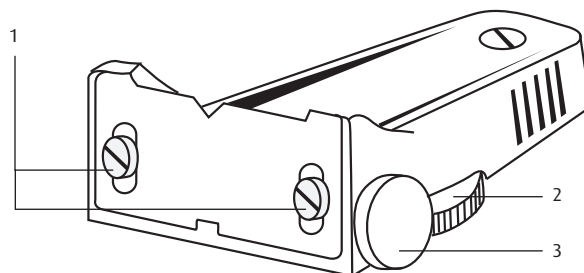


Open Sights

To zero your rifle sights for elevation, first set up a target at a fixed distance and test fire 4 or 5 pellets to establish a group. If the pellets strike below the point of aim, slacken the two rear sight aperture plate screws (1) to enable the plate to be raised slightly, re-tighten the screws and retest. Once an approximate zero has been found, finer adjustments can be made by rotating the knurled nut (2) under the sight base. Turning it clockwise will raise

the firing point of impact. The figures alongside the rear sight slide are for guidance only and do not represent distances. Lateral adjustment is made by turning the windage knob (3). Turn it clockwise to move the point of impact to the left.

The fore sight element can be adjusted for height after first slackening its fixing screw. The element may be removed and inverted to give a choice of bead or blade.



Fitting Telescopic Sights

The Meteor, Comet and Supersport have machined dovetail grooves, the Polaris and Lightning range have a raised scope rail, all accept scope mounts with an 11mm clamp. Refer to the scope manufacturer's instructions on fitting and adjusting.



We recommend the use of one piece scope mounts on spring rifles, if two piece mounts are used they should be of the two screw type. On models with dovetail grooves it is strongly advised that you fit a BSA scope stop kit (part # 18-1178) which has a shock absorbing pad to help protect the scope from recoil action. All lightning family models have the Maxigrip scope rail which incorporates a raised scope stop pin at the rear of the rail which the rear mount should be positioned against to prevent any possible movement.

Fitting a Silencer

On some rifles it is not possible to use open sights with a silencer, so an alternative sighting system like a telescopic sight will have to be fitted. To fit a silencer, remove the front sight, and follow the instructions supplied with the silencer. On the Polaris unscrew the barrel end cap and screw in BSA silencer adapter 16-6627, which has a 1/2" UNF thread.

retaining screw behind the trigger, and tighten as required. All air rifles require periodic maintenance and inspection, so even if everything seems to be in good working order, have your air rifle checked periodically by a competent gunsmith. You should always have the power of your air rifle re-checked following any maintenance or repair work as any repairs or adjustments could affect the power. **It is your legal responsibility to make sure the air rifle remains below the legal limit of 12 ft-lb.**

Diagrams and parts lists are available on our website at www.bsaguns.co.uk

2 Year Warranty All new BSA rifles carry a 2 year warranty against faulty parts and labour, this applies to new rifles only and is not transferable; proof of purchase is required. Excluded from this warranty are: failure due to misuse or abuse, the fitting of non-standard parts, and fair wear and tear including damage to the stock. All warranty work must be done by BSA or an authorised agent of the company, and should the rifle be collected or returned under warranty, BSA or their authorised agent reserve the right to charge for postage and / or inspection.

Care and Maintenance

After use, check that your rifle is unloaded and wipe the metal and woodwork surfaces with a lightly oiled cloth. Pay special attention to the metal finishes as these are not fully rustproof and are vulnerable to damp and particularly perspiration. If your rifle has become damp, make sure it is completely dry before you put it away.

The only other lubrication that your rifle will occasionally need after use is a very small smear of light grease on the sides of action where the barrel pivots. Never use oils containing silicone as they can cause damage to metal surfaces. Application of oil and grease except as directed by the manufacturer can often do more harm than good.

Your rifle has been designed and manufactured for optimum performance. Tampering with the components, or unauthorised modifications and alterations may make the rifle unsafe to use and will invalidate the warranty. It is important that the screws that hold the action in the stock are kept tight, so regularly check the forend fixing screws and the action

BSA GUNS (UK) Ltd. Armoury Road, Birmingham B11 2PP, England

BSA Guns (UK) Ltd, reserve the right to alter the designs or any constructional details of any product at any time without prior notice.

For the most up to date information on BSA products view our website at www.bsaguns.co.uk

© BSA Guns (UK) Ltd. Unauthorised sale, distribution, copying or reproduction of part or all of this material is not permitted without prior arrangement.